

MONTHLY MEMBERSHIP PROGRESS REPORT

LOCATION INDIA

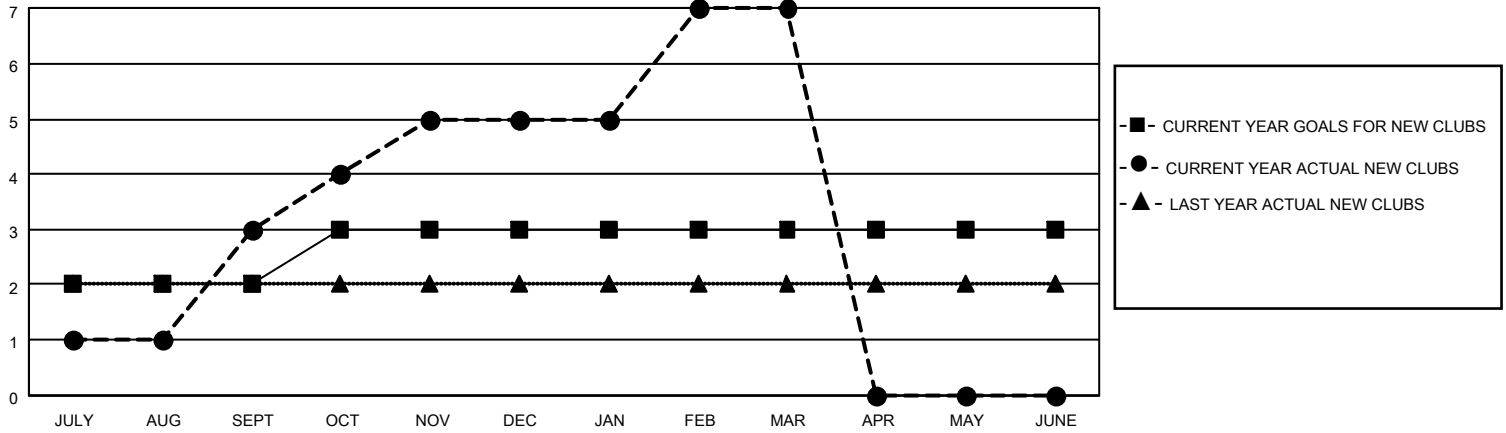
District 316 B

Results as of: 3/31/2022

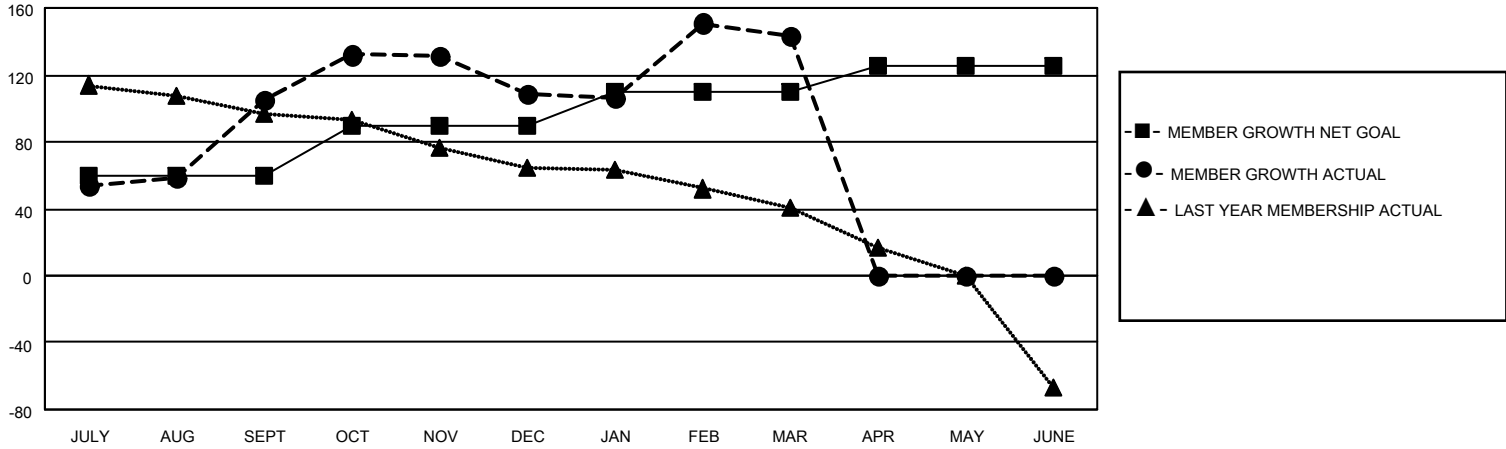
Clubs			
RESULTS FOR 2021-2022			
QUARTER	NEW CLUB GOAL	NEW CLUBS	DROPPED CLUBS
JULY/AUG/SEPT	2	3	0
OCT/NOV/DEC	1	2	2
JAN/FEB/MAR	0	2	0
APR/MAY/JUNE	0	0	0

Members			
RESULTS FOR 2021-2022			
QUARTER	MEMBER GROWTH NET GOAL	MEMBER GROWTH ACTUAL	DROPPED MEMBERS ACTUAL (including transfers)
JULY/AUG/SEPT	60	114	8
OCT/NOV/DEC	30	117	112
JAN/FEB/MAR	20	58	22
APR/MAY/JUNE	15	0	0

GOALS AND ACTUAL NEW CLUBS CUMULATIVE



GOALS AND ACTUAL MEMBERS CUMULATIVE



DROPPED CLUBS: 2	
DROPPED MEMBERS	
DECEASED	10
CLUB CANCELLED	36
OTHER	96
TOTAL	142

33 CLUBS OF 63 ADDED 1 OR MORE NEW MEMBERS

[CLICK HERE FOR CUMULATIVE MEMBERSHIP DATA](#)

<u>GENDER DISTRIBUTION</u>	
MALE	1,282 (75.81%)
FEMALE	409 (24.19%)
NON BINARY	0 (0.00%)
PREFER NOT TO ANSWER	0 (0.00%)
TOTAL FAMILY UNIT MEMBERS	568
FAMILY MEMBERS PAYING HALF DUES	332